

OLIVE PLAZA

P E O R I A • A R I Z O N A



6730-6750 West Olive Avenue • Peoria, Arizona 85345

For further information, please contact:

Michael A. Pollack
(480) 888-0888

Size: 31,700 Square Feet

Spaces Starting From: 900 Sq. Ft.

Zoning: C-2, City of Peoria

Traffic Counts: Corner Total: 48,500
Olive Avenue: 28,000 cars/day • 67th Avenue: 20,500 cars/day
(2010: City of Peoria)

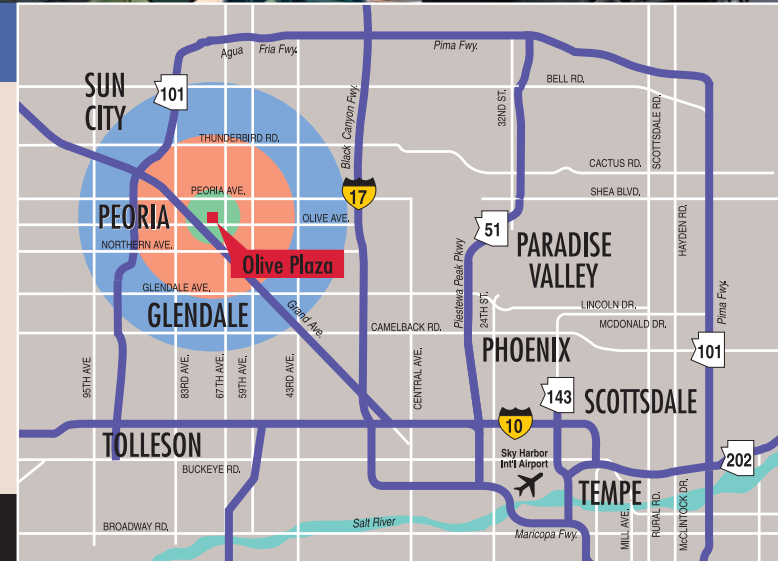
Demographics:

(2010: Applied Geographic Solutions / TIGER Geography)

	1 mile radius	3 mile radius	5 mile radius
Population:	17,887	154,742	404,653
Households:	6,680	50,012	134,460
Median Household Income:	\$ 42,085	\$ 52,773	\$ 50,975
Median Age:	34.4	32.4	34

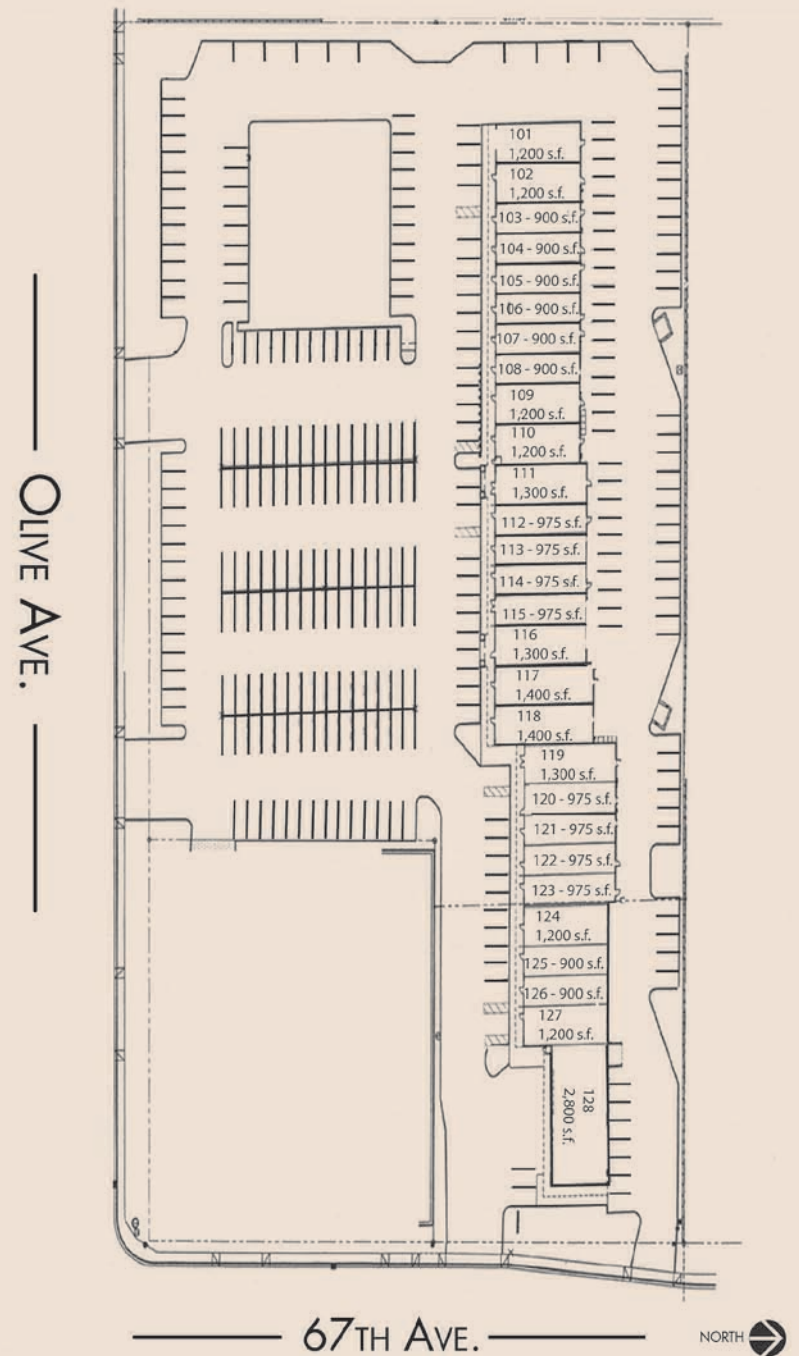
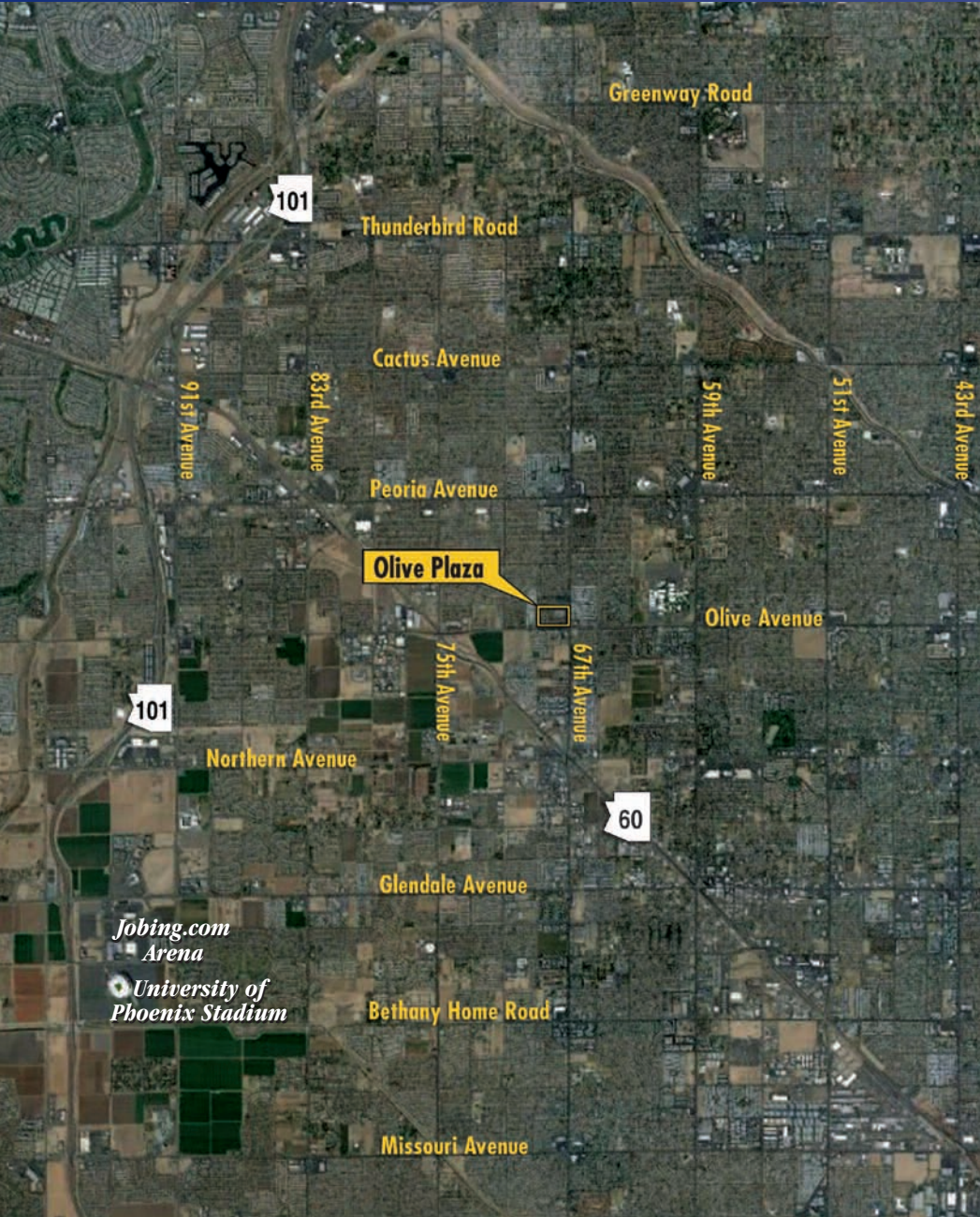
For leasing plans, availability and rates, visit us at:

www.pollackinvestments.com/olive



Michael A. Pollack
REAL ESTATE INVESTMENTS

The information contained herein are estimates obtained from sources we deem reliable. While we have no reason to doubt its accuracy, we do not guarantee it.



For further information, please contact:

Michael A. Pollack
 (480) 888-0888

Michael A. Pollack
REAL ESTATE INVESTMENTS

* Square foot indications are approximate

1136 West Baseline Road • Mesa, Arizona 85210 • (480) 888-0888 • fax (480) 814-7741 • www.pollackinvestments.com