

WESTVIEW PLAZA

P H O E N I X • A R I Z O N A



2929 North 75th Avenue • Phoenix, Arizona 85033

For further information, please contact:

Michael A. Pollack
(480) 888-0888

Size: 94,214 Square Feet

Spaces Starting From: 840 Sq Ft.

Zoning: C-2, City of Phoenix

Traffic Counts: Corner Total: 74,600
(2010: City of Phoenix)
75th Avenue: 41,900 cars/day • Thomas Road: 32,700 cars/day

Demographics:

(2010: Applied Geographic Solutions / TIGER Geography)

	1 mile radius	3 mile radius	5 mile radius
Population:	24,653	173,934	306,818
Households:	6,669	49,813	100,615
Median Household Income:	\$ 38,957	\$ 43,914	\$ 43,398
Median Age:	26.7	27.7	28.2

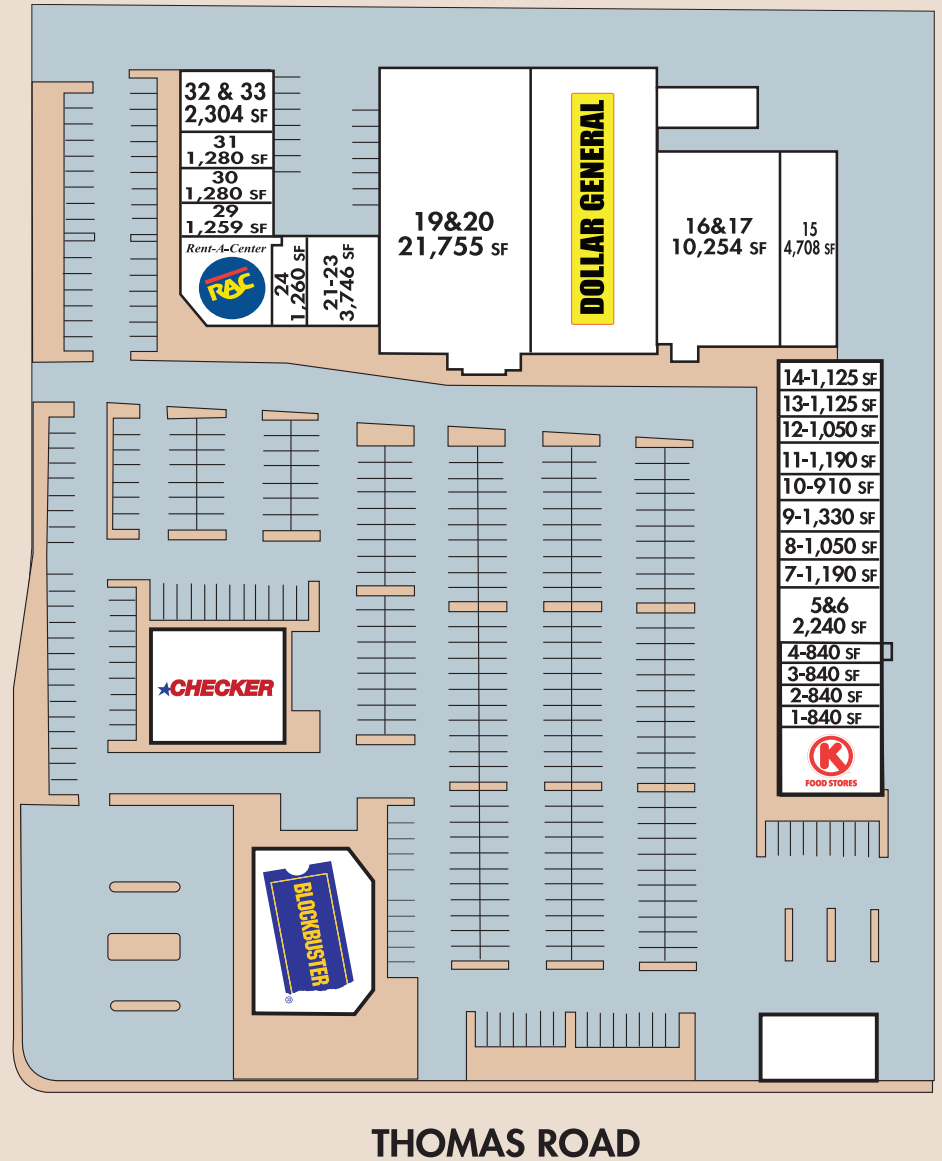
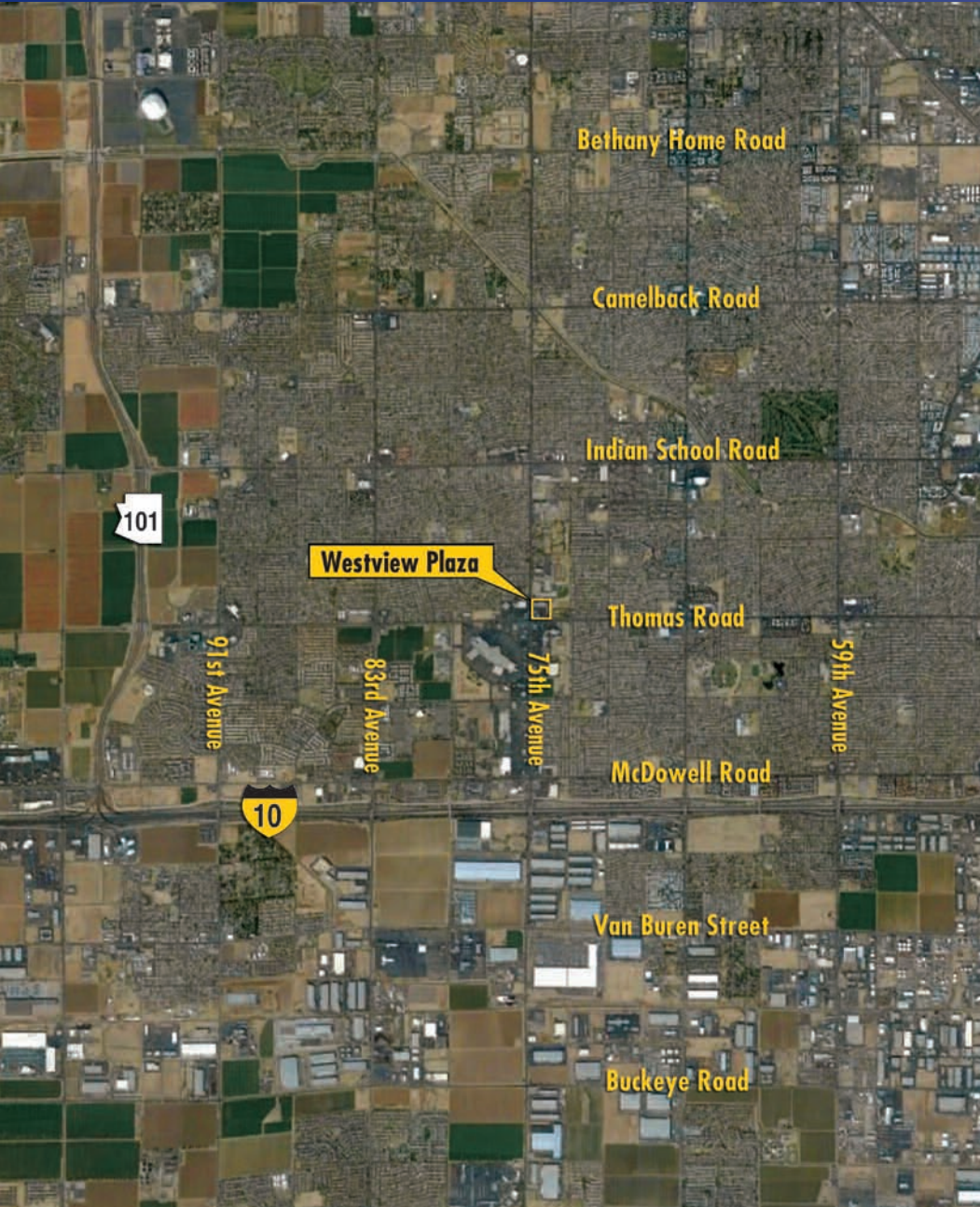
For leasing plans, availability and rates, visit us at:

www.pollackinvestments.com/westview



Michael A. Pollack
REAL ESTATE INVESTMENTS

The information contained herein are estimates obtained from sources we deem reliable. While we have no reason to doubt its accuracy, we do not guarantee it.



For further information, please contact:

Michael A. Pollack
(480) 888-0888

Michael A. Pollack
REAL ESTATE INVESTMENTS

* Square foot indications are approximate

1136 West Baseline Road • Mesa, Arizona 85210 • (480) 888-0888 • fax (480) 814-7741 • www.pollackinvestments.com